

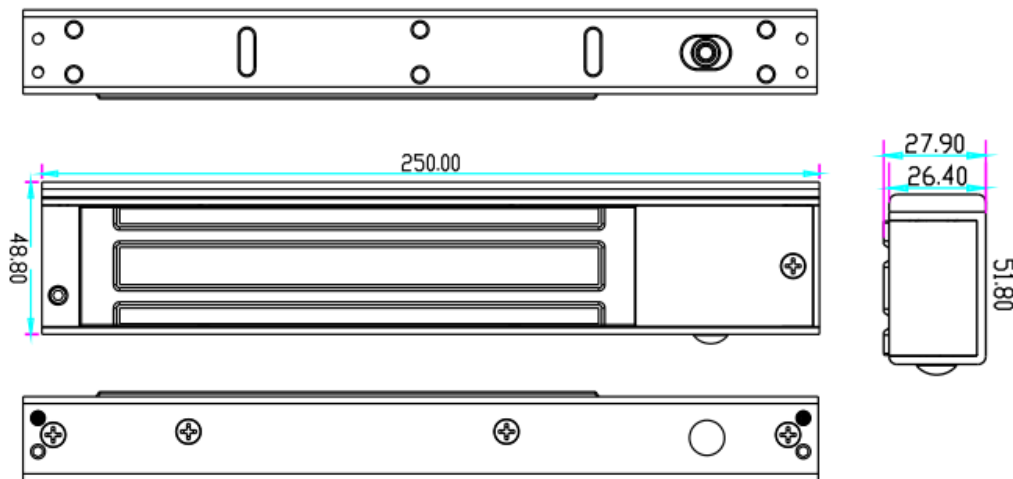
600 lb Magnetic Sheet

Model: MAG600N-LED

Specifications

Dimensions LxWxH	9.54 x 2.03 x 1.09in / 250 x 51.8 x 27.9mm
Clamping force	600Lbs (280Kg)
Voltage	12V DC or 24V DC
Current	12V/500mA or 24V/250 mA
For use in	Security door, iron door, aluminum door.
Operating temperature	-10~+55°C
Weight	2.1Kg

Diagram



Please read the following instructions before installation.

- Please handle the lock carefully. Any damage to the surface or plate of the armor will reduce the magnetic force.
- Fix the lock on the door frame and the plate on the door leaf.
- Please keep the door closed when making holes
- Tighten the lock bolts.
- The limit value of the equipment is 0.5A / 30V DC. Do not overload.
- Make sure that the plate can be shaken slightly when it is locked, so that the rubber grommet of some spaces to adjust the position of the plate and the lock.
- Select the correct wiring for DC 12V or 24V DC voltage input.

Cable diagram

A. 12VDC

Power required 0.5Amp (minimum). Connect the positive (+) lead from a 12VDC power supply to V +.

Connect the negative (-) cable from a 12VDC power supply to V -.

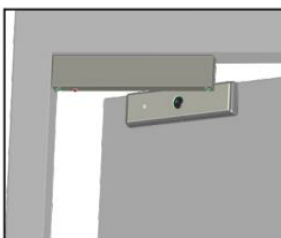
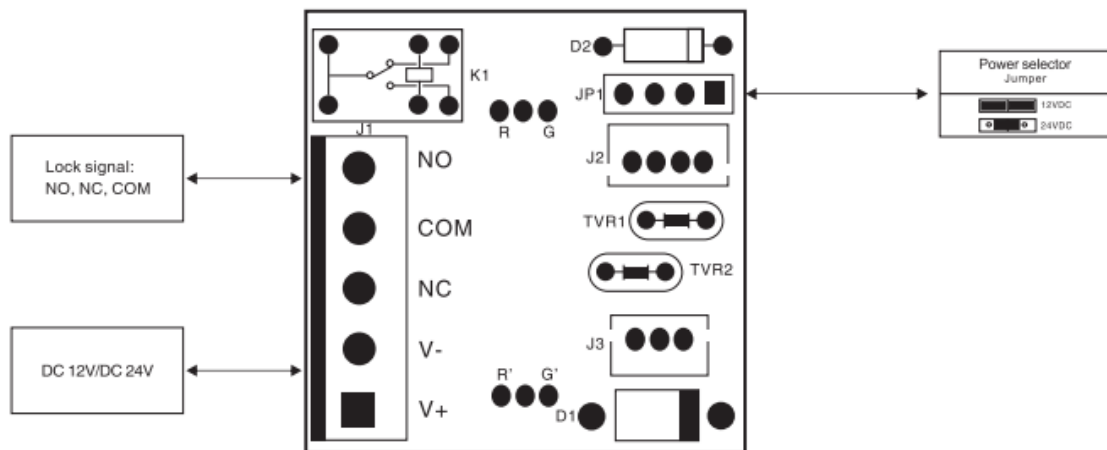
Check the bridge in 12 V DC operation.

B. 24VDC

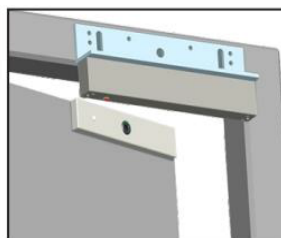
Power required 0.25Amp (minimum).

Connect the positive (+) lead of a 24VDC power supply to V +. Connect the negative (-) cable of a 24VDC power supply to V -.

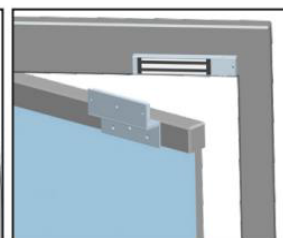
Check that the bridge is in 24VDC operation.



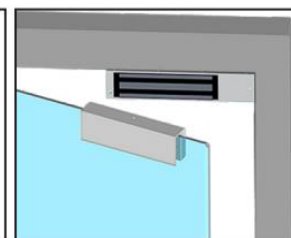
Mounting installation in "I"



Mounting installation in "L"

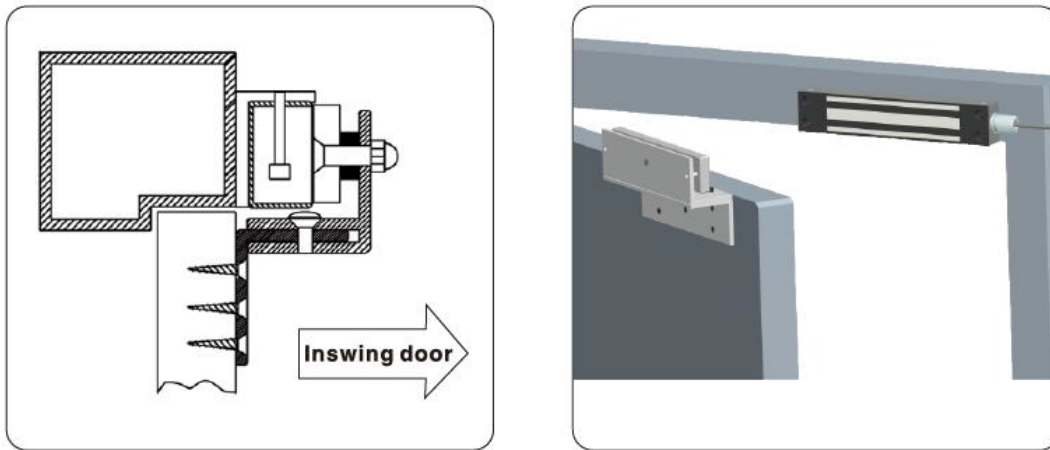


Mounting installation in "ZL"



Mounting installation in "U"

ZL Support



Step 1: There should be 2 metal washers and rubber washer between the plate and the Z-shaped bracket. Put the rubber washer between 2 metal washers.

Block the top flat screw in the center of the plate to the Z-shaped plate.

Step 2: Drill 5 holes for fixing the Z-shaped plate on the door fan. Make sure that the hole positions correspond to the magnet. Firmly fix the Z-shaped plate on the door fan.

Adjust the proper combination between the Z-shaped plate and the strike plate.