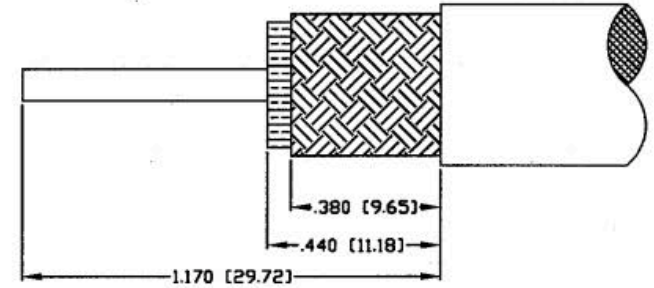
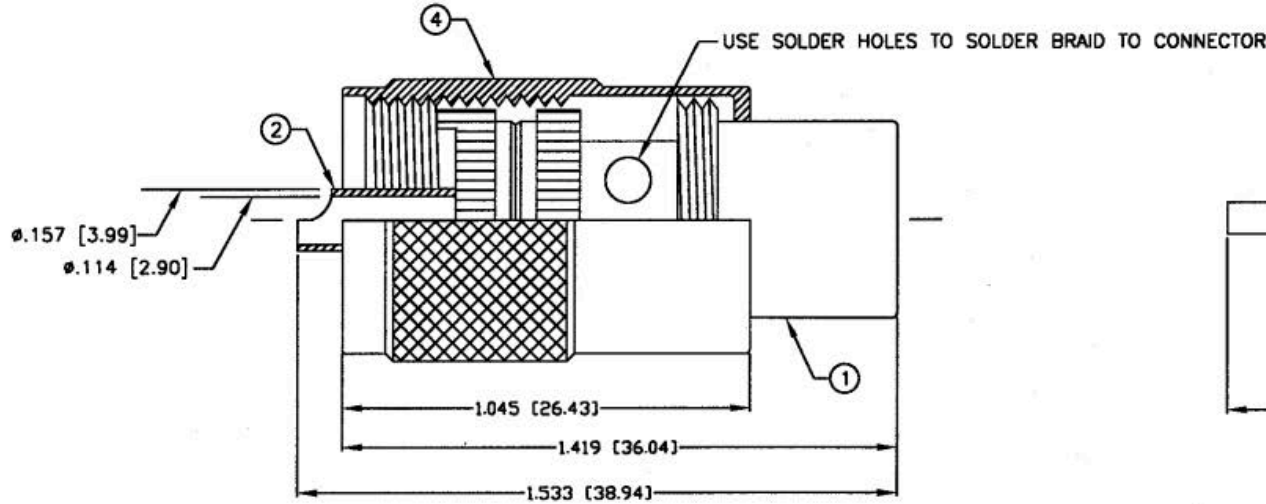


# UHF PLUG SOLDER



**RECOMMENDED STRIPPING INSTRUCTIONS**

## SPECIFICATIONS:

IMPEDANCE: NON CONSTANT  
 FREQUENCY RANGE: 0-300 MHz  
 VOLTAGE RATING: 500 VOLTS RMS

(E) FOR RG-8, BA, 213/U

(F) FOR RG-9, 9A, 98, 214/U

(1) FOR BELDEN 9913, 9914, RG-8/U TYPE, RG-393/U & TIMES LMR-400

WLRFU-53Q REQUJICER

(C) FOR RG-58, 58A, 58C, 141, 141A, 400/U

(C1) FOR RG-55, 55A, 558, 142, 142A, 1428 & 223/U WLRFIJ-531

REQUCER

(D) FOR RG-59, 59A, 598, 62, 62A, 62C 71, 140 & 210/U

(P) FOR ANTENNA SPECIALIST K214 & PRO-FLEX 800, TIMES AA3096 & COMM/SCOPE 2278 & 2279 CABLE

(X) FOR RG-8/X & 30/U, BELDEN 9258, TIMES LMR-240 & LMR-240 ULTRAFLEX

## UNLESS OTHERWISE SPECIFIED:

1. REMOVE ALL BURRS
2. BREAK ALL CORNERS & EDGES .005 R. MAX
3. CHAMFER 1ST & LAST THREADS 45°
4. SURFACE ROUGHNESS 63 FINISH MIL-STD-10
5. DIAMETERS ON COMMON CENTERS TO BE CONCENTRIC WITHIN .002 T.I.R.
6. ALL DIMENSIONS ARE AFTER PLATING.

**DIMENSIONS ARE IN INCHES AND [MILLIMETERS]**

**UNLESS OTHERWISE NOTED TOLERANCES ARE:**

| DECIMALS        | DIAMETER        |
|-----------------|-----------------|
| .XXX±.003 (.08) | .XXX±.001 (.03) |
| .XX±.005 (.13)  | .XX±.003 (.08)  |

|              |          |              |        |
|--------------|----------|--------------|--------|
| 1 BODY       | 1 BRASS  | SILVER .30u" | 000494 |
| 2 PIN        | 1 BRASS  | SILVER .30u" |        |
| 3 DIELECTRIC | 1 D.A.P. | PANTONE 129  |        |
| 4 SHELL      | 1 BRASS  | NICKEL .80u" |        |

THIS DRAWING CONTAINS INFORMATION PROPRIETARY TO RF INDUSTRIES,  
 ANY UNAUTHORIZED USE OF THIS DRAWING IS EXPRESSLY PROHIBITED

WITHOUT WRITTEN PERMISSION FROM RF INDUSTRIES.  
 ANY VIOLATION IS PUNISHABLE UNDER U.S. COPYRIGHT LAWS.

ALL DIMENSIONS ARE FOR REFERENCE ONLY