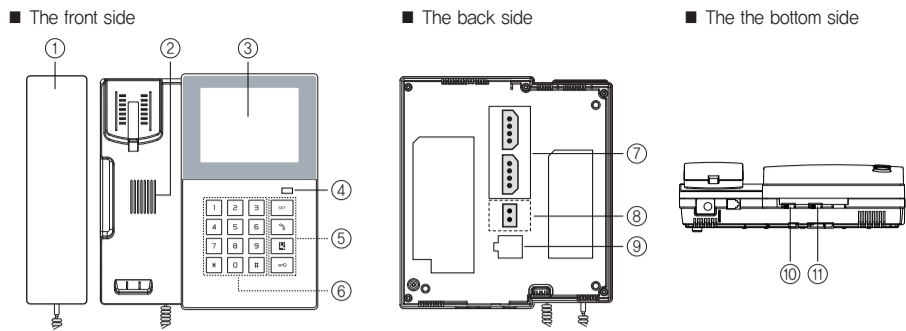
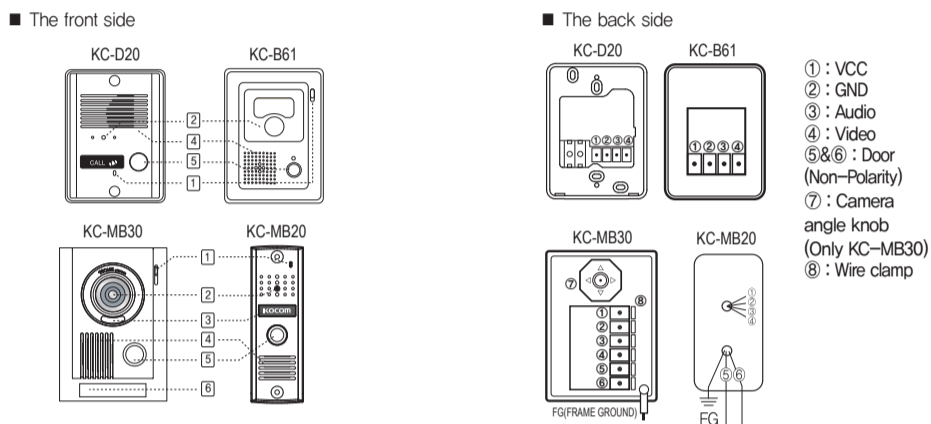


Name and Functions of each part



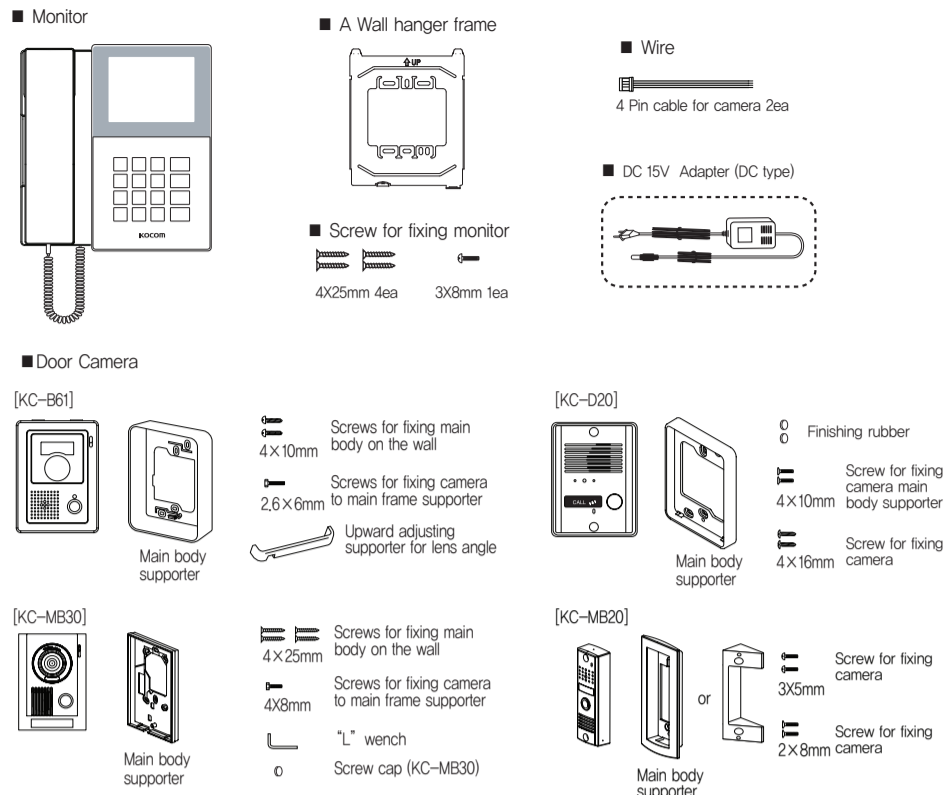
- 1 Handset
- 2 Speaker
- 3 Monitor Screen : 4" flat type B/W CRT
- 4 Power LED
- 5 Set : Setting of special functions Set button
 - ↶ : PABX Button
 - ↷ : Identification and communication with a visitor at door
 - ↻ : Door opening during communication
- 6 Dial button
- 7 Camera connector
- 8 Door opener connector
- 9 PABX connector
- 10 Call volume : 2-level adjusts the call melody and telephone ring volume
- 11 Brightness volume : 2-level adjusts the picture brightness



- 1 C-Mic : To communicate with Monitor
- 2 Camera Lens
- 3 LED
- 4 Speaker : When visitor calls, the voice from monitor comes out of the speaker.
- 5 Call Button : By pressing the button, the related house will be called.
- 6 Name plate

- 1 : VCC
- 2 : GND
- 3 : Audio
- 4 : Video
- 5&6 : Door (Non-Polarity)
- 7 : Camera angle knob (Only KC-MB30)
- 8 : Wire clamp

Components of product

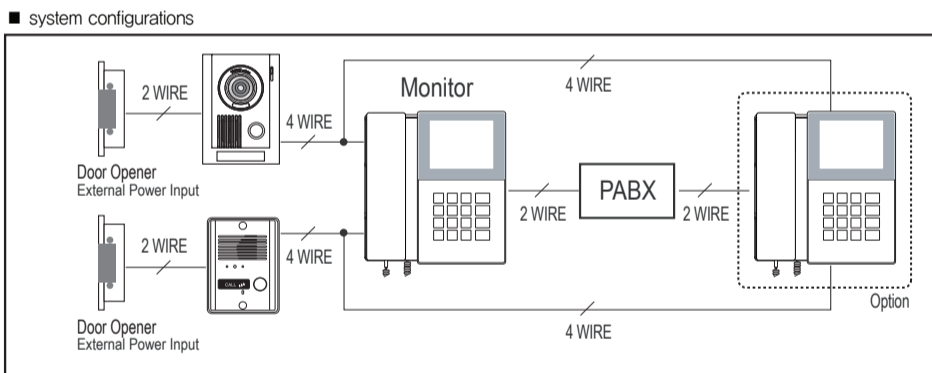


Specifications

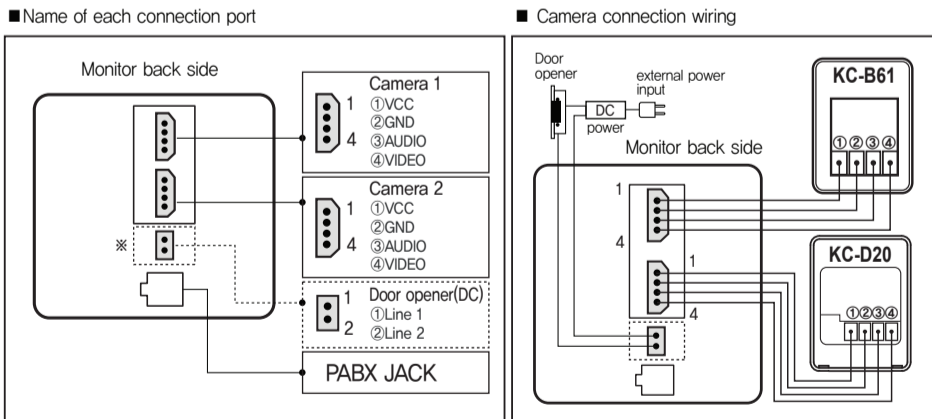
	Model number	KVM-340		KVM-D340	
		KC-MB30	KC-D20	KC-B61	KC-MB20
MONITOR	Power Source	AC90V-AC240V 50/60Hz		DC 15V±1V 1.2A	
	Power Consumption	Stand by 1.5W, Max 18W			
	Operating Temperature	0°C ~ +40°C			
	CRT	4" flat tube			
	Communication System	Duplex handset conversation			
	Wiring	Camera : 4 wire (Polarity) PABX : 2 wire			
	Mount Type	Surface mount			
Dimension	207(W) × 215(H) × 60(D) mm				
DOOR CAMERA	Power Source	DC 12V±1V (Power from Monitor)			
	Power Consumption	Max 3W			
	Operating Temperature	-10°C ~ +50°C			
	Dimension	110(W)×158(H)×39(D)mm	96(W)×127(H)×32(D)mm	95(W)×127(H)×34(D)mm	40(W)×120(H)×22(D)mm
	Angle of Lens	Diagonal 120° (angle adjustable)	Diagonal 90°	Diagonal 90°	Diagonal 90°

※Lobbyphone connection : KVL-C302i, KVL-C303i, KVL-C304i, KVL-TC306i, KVL-TC308i

Product connection diagram

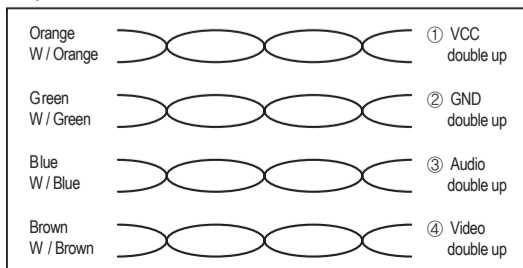


※ To connect cameras, put 1~4 monitor wire ports onto camera ports in order with polarity.



※ Door Open Connection from Monitor :
The monitor should be the version which has door opener port.

■ Cable requirement – Based on distance from a camera to the monitor
– Upto 100M : CAT5 cable

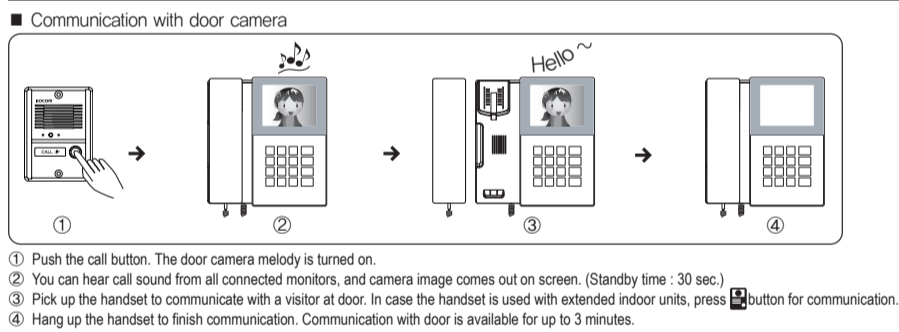


※ According to outside environment, you may view the images somewhat unclear. However, they do not result from any defect or trouble of the product.

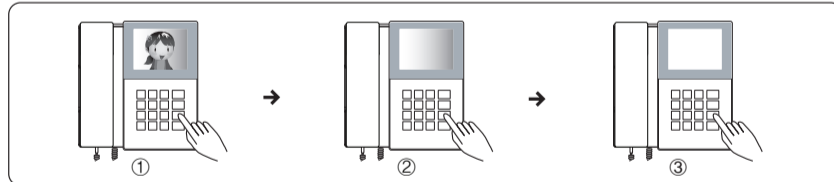
※ CAT5 wire configuration
※ In case of more than 50m of CAT5 cable length, the screen and voice quality can get lower. But the symptom is not a kind of fault. So less than 50m is recommended.

- Upto 50M : TIV 0.65mm² cable
- Upto 100M : Over TIV 0.8mm² cable
- Upto 150M : TIV 0.8mm² cable + RG-59 / U RG-59 / U (Coaxial cable) for Video signal (Connect core to Video & shield to GND)

Instructions for operation

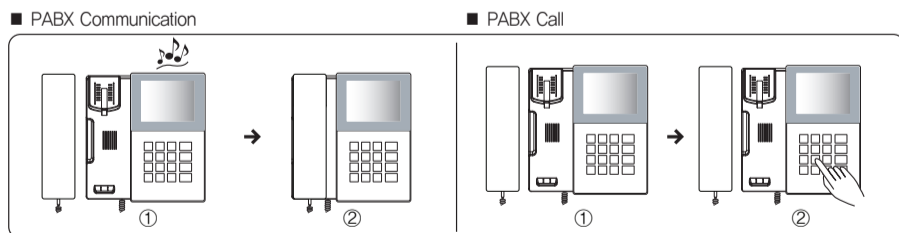


■ Camera monitoring-Don't need to hold handset



- 1 To view the state of door without communication, press [CALL] button and view the image from door camera 1 through the screen.
- 2 To view the image from door camera 2 through the screen, press [CALL] button once more.
- 3 To end door monitoring, press [CALL] button once more. Door camera monitoring is available for up to 1 minute.

※ Pick up the handset to communicate with a visitor at door.



- PABX Communication
 - 1 When PABX call is received from the other monitor (Using PABX). Please, pick up the handset. Then, communication is made available immediately.
 - 2 Hang up the handset to finish communication
 - PABX call
 - 1 Pick up the handset and check the dial tone.
 - 2 Push the house number and the call goes to the house by PABX.
- ※ While communicating by PABX, if a call comes from door camera, the monitor will ring and turn on its screen. Push [CALL] button and the door communication will start with cutting off PABX call.

■ Opening door automatically

For this purpose, automatic DC doorlock should be installed on the door and connected to camera or monitor. If you press [CALL] button during the communication with door, the door is opened automatically. After opening the door, you may end the communication by hanging up the handset or pressing [CALL] button.

■ Door Camera Call Melody Selection (5 Melody)

With hanging up the handset, select the camera 1 or camera2 using monitoring function. While screen is on, press [CALL] button for 3 seconds. Mode setting sound rings. Every time you press [CALL] button, saved bell sounds are output. Select the bell sound you want and press [SET] button to change the bell sound of related door camera. With mode setting sound ringing, the changed bell sound is saved. Screen is automatically turned off.

■ CCTV Monitoring (3min)

With hanging up the handset, press [CALL] button to select the door camera for which you want to set CCTV monitoring function. While screen is on, press [SET] button for 3 seconds. With mode setting sound ringing, monitoring time of the selected camera changes from 1 to 3 minutes. Screen is automatically turned off. To cancel this function, follow the same steps as described above.